

## Product datasheet for TA503303

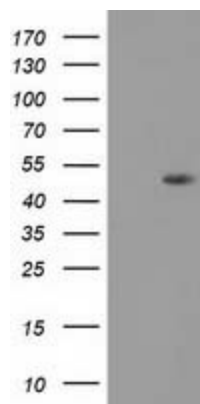
### DOK2 Mouse Monoclonal Antibody [Clone ID: OT11G9]

#### Product data:

Product Type:	Primary Antibodies
Clone Name:	OT11G9
Applications:	WB
Recommend Dilution:	WB 1:2000
Reactivity:	Human
Host:	Mouse
Isotype:	IgG1
Clonality:	Monoclonal
Immunogen:	Full length human recombinant protein of human DOK2(NP_003965) produced in HEK293T cell.
Formulation:	PBS (PH 7.3) containing 1% BSA, 50% glycerol and 0.02% sodium azide.
Concentration:	0.36 mg/ml
Purification:	Purified from mouse ascites fluids or tissue culture supernatant by affinity chromatography (protein A/G)
Predicted Protein Size:	45.2 kDa
Gene Name:	docking protein 2
Database Link:	<a href="#">NP_003965 Entrez Gene 9046 Human</a>
Background:	The protein encoded by this gene is constitutively tyrosine phosphorylated in hematopoietic progenitors isolated from chronic myelogenous leukemia (CML) patients in the chronic phase. It may be a critical substrate for p210(bcr/abl), a chimeric protein whose presence is associated with CML. This encoded protein binds p120 (RasGAP) from CML cells. [provided by RefSeq]
Synonyms:	p56DOK; p56dok-2
Protein Families:	Druggable Genome



[View online »](#)

**Product images:**

HEK293T cells were transfected with the pCMV6-ENTRY control (Left lane) or pCMV6-ENTRY DOK2 ([RC207621], Right lane) cDNA for 48 hrs and lysed. Equivalent amounts of cell lysates (5 ug per lane) were separated by SDS-PAGE and immunoblotted with anti-DOK2. Positive lysates [LY418321] (100ug) and [LC418321] (20ug) can be purchased separately from OriGene.